

# Bungay Marathon Car Parking and Directions - 2018

Road closure (marshalled and open to runners cars at certain times)



To Car Parking



Walk to Start



There is no parking at the Race HQ

Free parking, by kind permission of the owners, is at eight locations in Bungay.

Car park 1, Outney Common, will be locked between 10.30 - 12.30.

Please display Marathon Parking Permit on your dashboard if using car parks 3 - 6

Please allow at least 20 minutes to walk to the Race HQ.

The Car Parks will be unattended during the day.

Car Parks 1 and 2 will be locked at 16.00 or when the last car has departed.

Cars parked at entirely owners risk.

BACT will be providing a shuttle bus service which will pick up from:

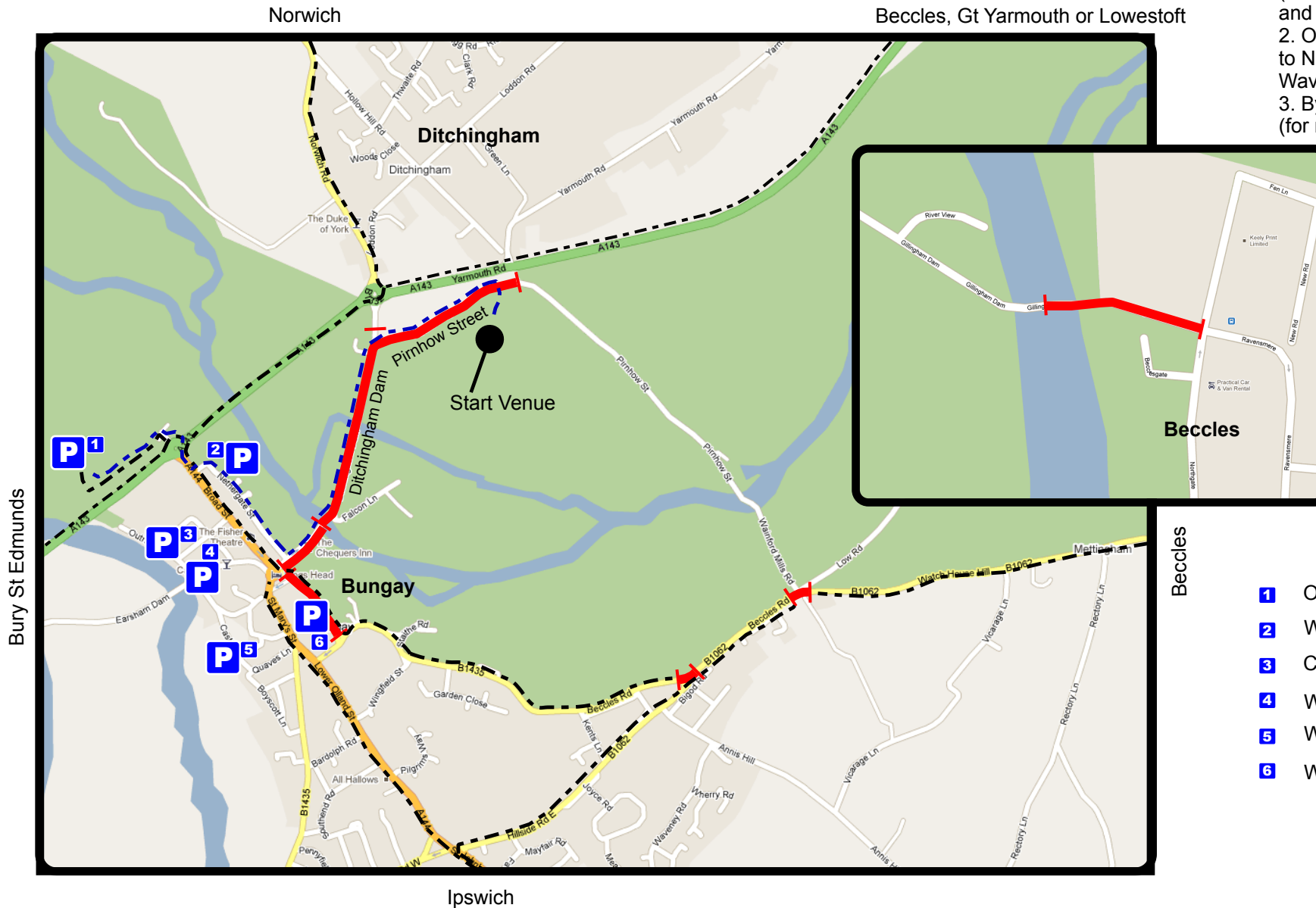
1. Chaucer Club in Scales Street (for runners parking on Clays car park and car park on Scales / Webster St)
2. On Broad Street approximately next to Nethergate St (for runners parking at Waveney Trucks)
3. By entrance to Outney Caravan Park (for runners parking on the common)

At the Race HQ the stop will be at the junction of Pirnow St and Ditchingham Dam.

The busses will be in BACT livery and will have a corex sign 'Race Courtesy Bus'

The service will run 8 AM - 3 PM.

Please allow enough time for the short walk as we cannot guarantee transport for everyone.



## Car Parks

- 1** Outney Common
- 2** Waveney Trucks
- 3** Clays
- 4** WDC Scales Street
- 5** WDC Priory Lane
- 6** WDC Wharton Street